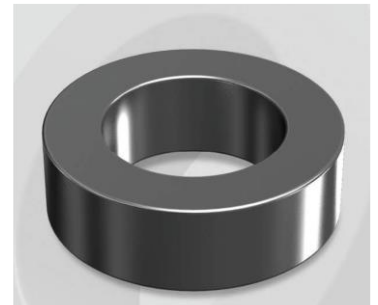


# CK777060G

## Electrical Characteristics

Material	Permeability ( $\mu$ )	AL $\pm$ 8% (nH/N <sup>2</sup> )	DCB (% min) @ 100 Oe	Coreloss (mW/cm <sup>3</sup> , max) @ 50kHz, 500G
Mega Flux	60	68	59.8	160

OD : 777



## Core Dimensions

Dimensions		Uncoated		Coated		Color	Packaging
		(mm)	(inch)	(mm)	(inch)		
OD	(Max)	77.80	3.063	78.90	3.106	Black	Box Qty = 40 pcs
ID	(min)	49.23	1.938	48.00	1.890		
HT	(max)	12.70	0.500	13.97	0.550		

## Physical Characteristics

Cross Section (A)	Path Length ( $l$ )	Window Area (Wa)	Volume (V)	Breakdown Voltage (Vac)
1.770 cm <sup>2</sup>	20.00 cm	17.99 cm <sup>2</sup>	35.400 cm <sup>3</sup>	1,000
0.274 in <sup>2</sup>	7.87 in	3,550,424 cmil	2.160 in <sup>3</sup>	

## Winding Information

0% Winding length/turn (cm)		
5.884		
40% winding factor Surface Area (cm <sup>2</sup> )		
224.42		
40% Wound Di.(mm)		
OD	ID	HT
91.14	31.33	28.42

## Typical DC Bias Performance

